

**TTRE TradePlan Trainer – Path to Successful Trading
“REPLAY” - Execution Example Module 1 Set of Rules
For Educational Purposes ONLY – see disclaimer
TradeTheRightEdge LLC, August 18,2011**

IMPORTANT NOTE and DISCLOSURE:

The TTRE TradePlan Trainer is a “trader training tool” to learn, build basic trading execution skills and discipline with Live Market or in Replay Mode in a **NO RISK** environment using a Simulator that removes the attention from monetary aspect. It is **NOT** intended to be traded in a real account as there is no basis to assume that this or any TTRE TradePlan would be profitable. There is a high degree of risk for financial loss

Practice these trading techniques and executions ONLY in a Simulator Trading Account. DO NOT trade in a real account.

The purpose of using a Simulator in **Real time, Live Market** or **Replay Mode** in a **NO RISK environment** is to practice trading discipline and execution without fear or hesitation with "TTRE TradePlan Trainer" - Basic.

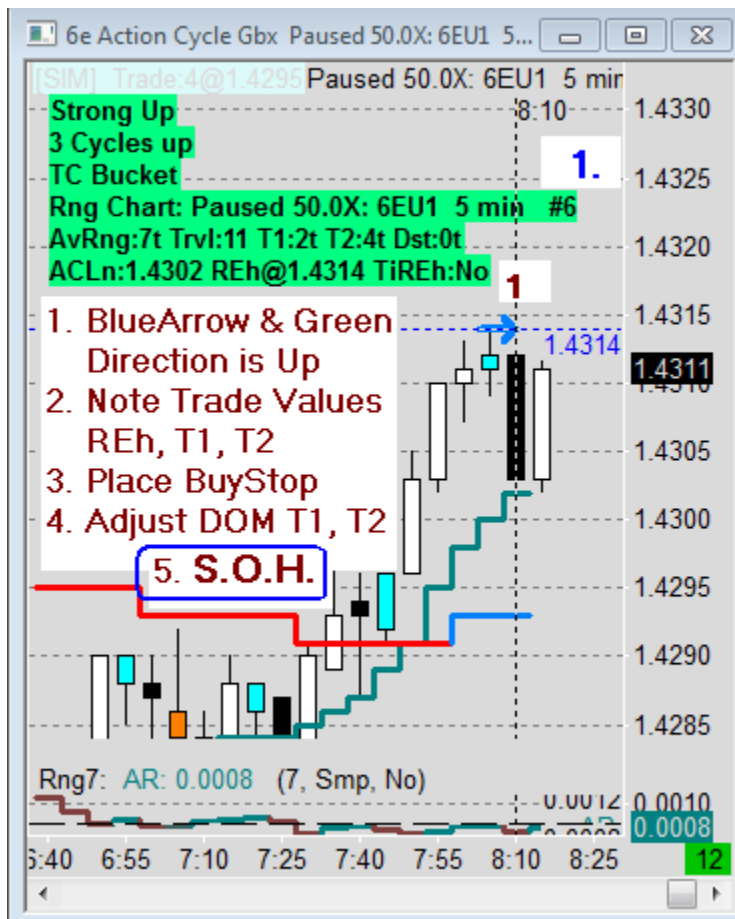
The TTRE TradePlan Trainer is NOT intended to show profitability, but is the foundation to learn Dynamic Market Structure, Pattern and Price Action Trading

TTRE TradePlan Trainer – Path to Successful Trading
“REPLAY” - Execution Example Module 1 Set of Rules
For Educational Purposes ONLY – see disclaimer
TradeTheRightEdge LLC, August 18,2011

“Replay” Execution Example Long Trade
Monday, August 15, 2011 - Profitable Scenario
Module 1 Set of Rules

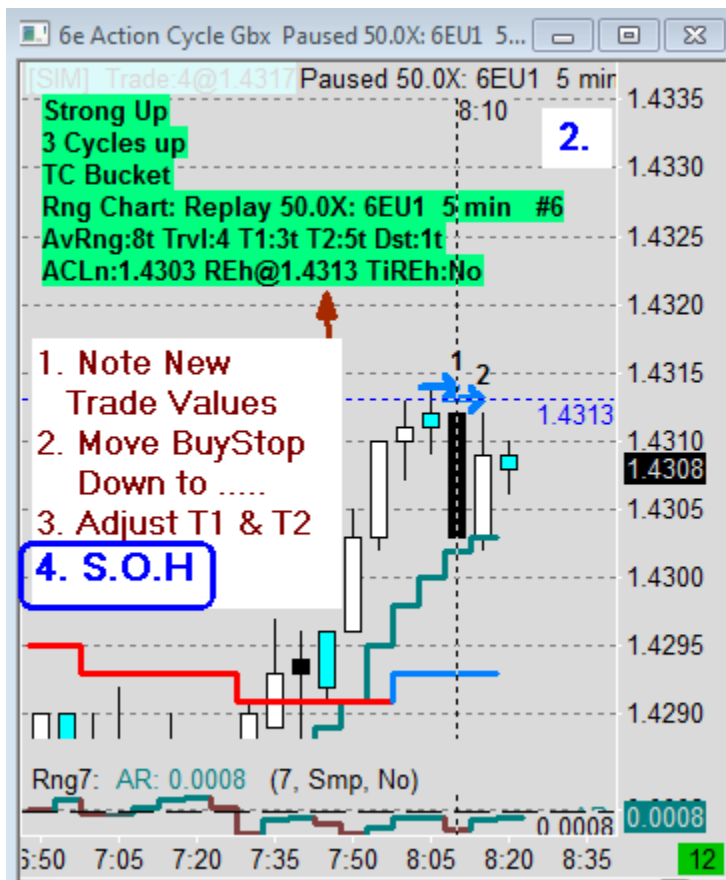
Note: Other Replay Examples will include Losing Trade Scenarios.

1. **Place BuyStop at the REh price in the MarketStrengthDisplay (MSD)**
2. **Adjust on your Simulator Platform Target 1 and Target 2 Limit Order Exit prices from MSD displayed offset values**
3. **Place InitialStop at least 2x Average Range, AvRng for the exercise to provide more trades and opportunities.** Purpose is to build skills in handling order placement strictly following a Set of Rules



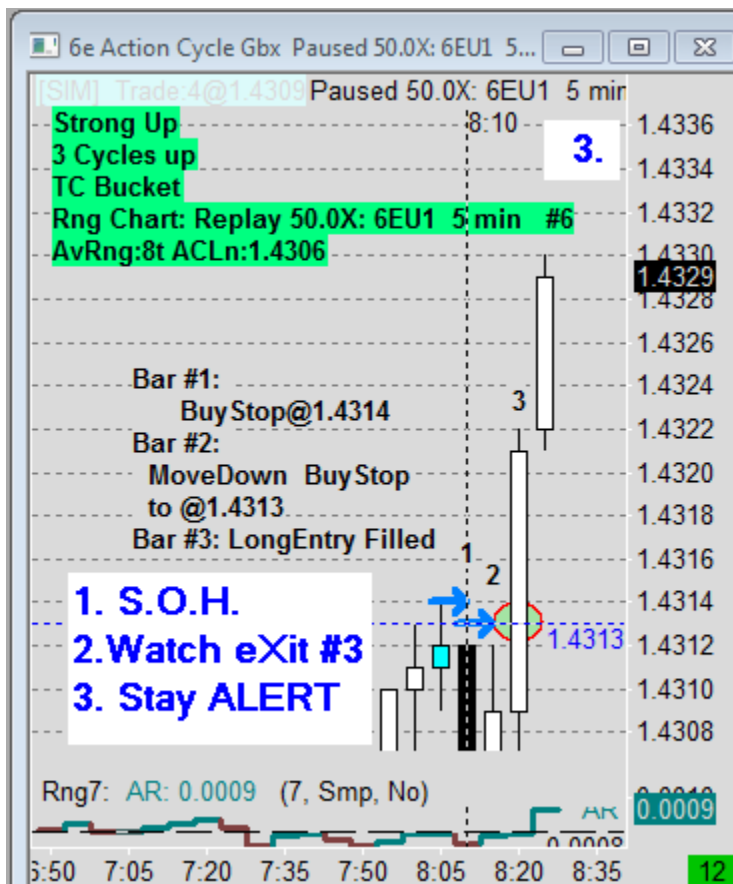
TTRE TradePlan Trainer – Path to Successful Trading
“REPLAY” - Execution Example Module 1 Set of Rules
For Educational Purposes ONLY – see disclaimer
TradeTheRightEdge LLC, August 18,2011

1. **First BlueArrow** Retracement Entry at 1.4314 not reached
2. **Move the BuyStop Entry Order down to revised REh price 1.4313, second BlueArrow**
3. Adjust the revised Target 1 and Target 2 price Limit Exit Orders



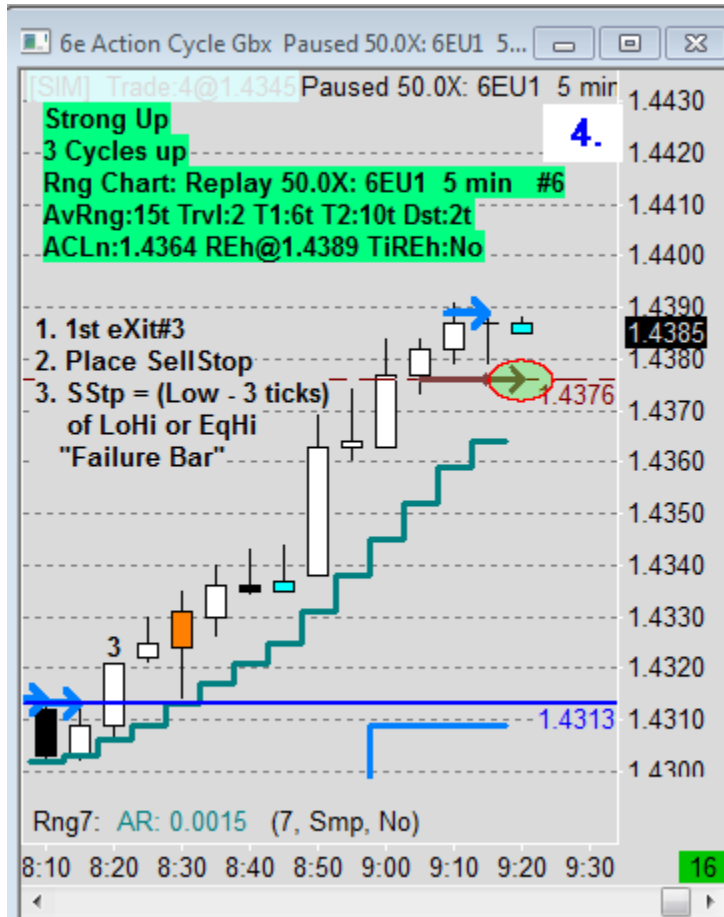
TTRE TradePlan Trainer – Path to Successful Trading
“REPLAY” - Execution Example Module 1 Set of Rules
For Educational Purposes ONLY – see disclaimer
TradeTheRightEdge LLC, August 18,2011

1. **Second BlueArrow REh BuyStop filled** at 1.4313
2. **Sit-on-Hands (S.O.H.) and DO NOT Interfere with the trade**
3. **Actively monitor position:**
 - (1) Target fills
 - (2) Watch Countdown bar closing timer
 - (3) Stay Alert for eXit #3 as bar closing time approaches
 - (4) If eXit#3 is probable, get READY to place eXit #3 StopOrder exit with mouse pointer
on estimated price level in the DOM.



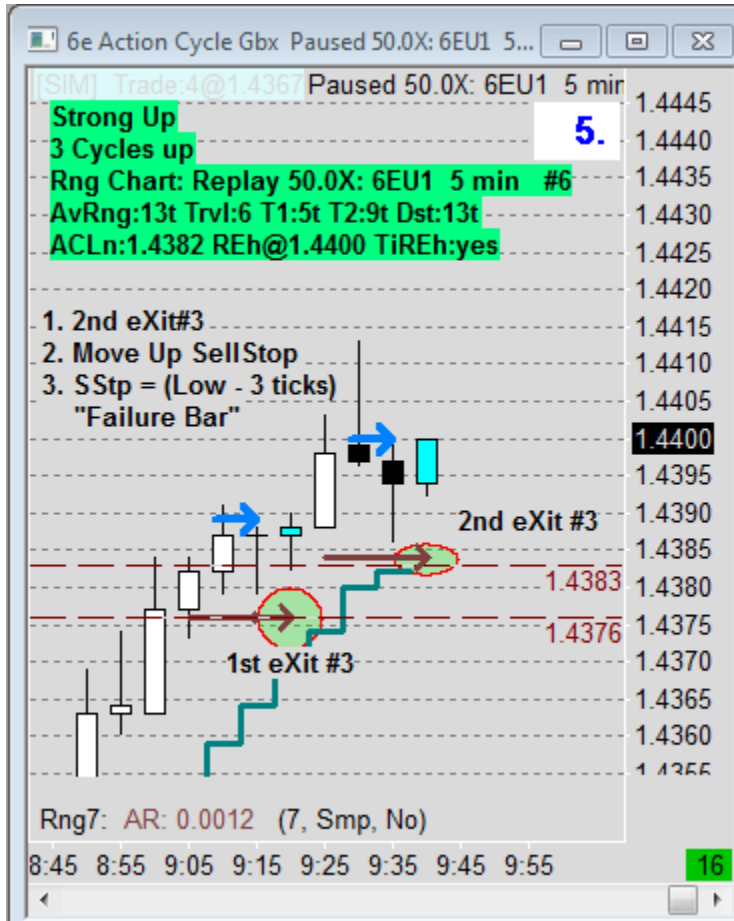
TTRE TradePlan Trainer – Path to Successful Trading
“REPLAY” - Execution Example Module 1 Set of Rules
For Educational Purposes ONLY – see disclaimer
TradeTheRightEdge LLC, August 18,2011

1st eXit #3 print



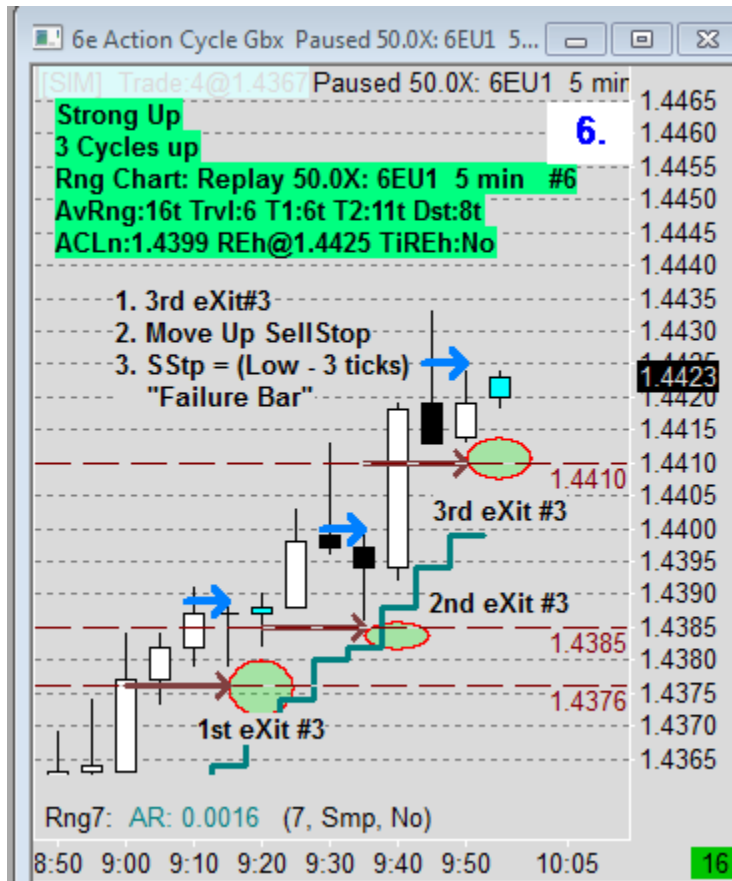
TTRE TradePlan Trainer – Path to Successful Trading
“REPLAY” - Execution Example Module 1 Set of Rules
For Educational Purposes ONLY – see disclaimer
TradeTheRightEdge LLC, August 18,2011

2nd eXit #3 print



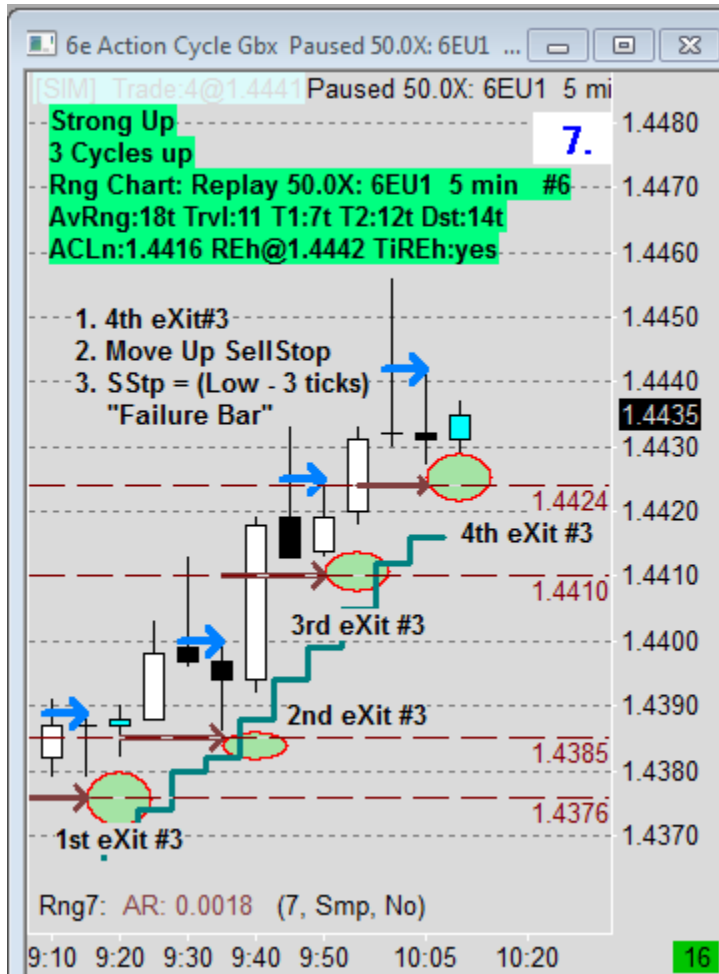
TTRE TradePlan Trainer – Path to Successful Trading
“REPLAY” - Execution Example Module 1 Set of Rules
For Educational Purposes ONLY – see disclaimer
TradeTheRightEdge LLC, August 18,2011

3rd eXit #3 print



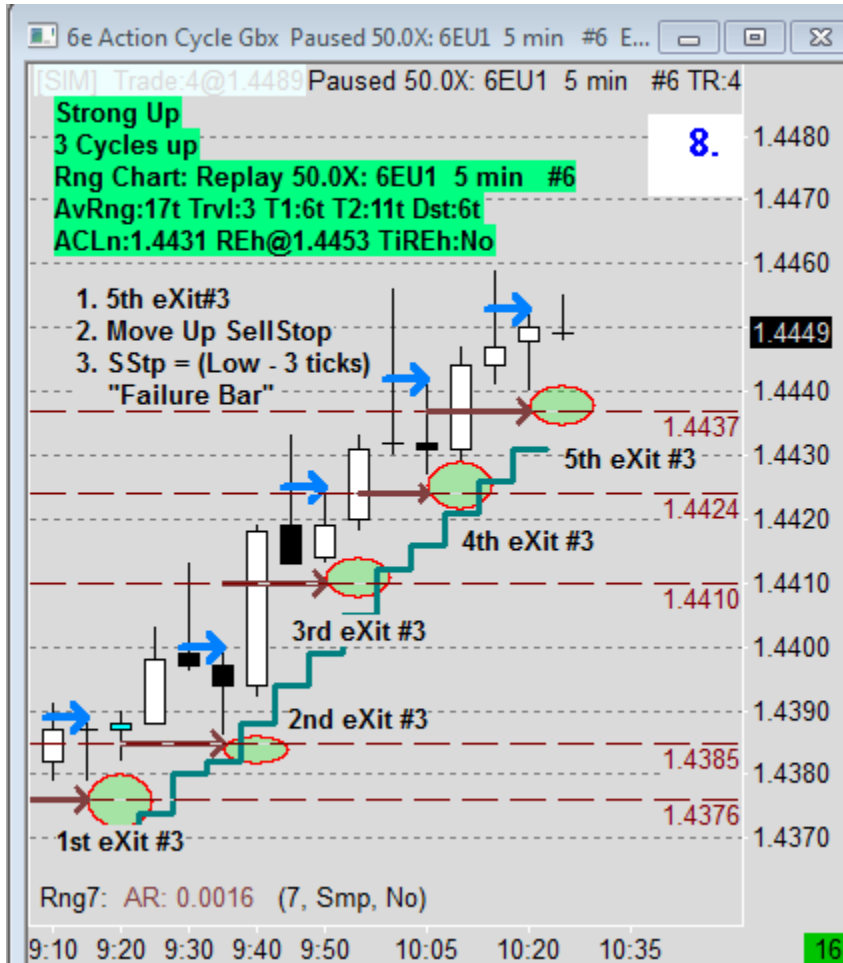
TTR TradePlan Trainer – Path to Successful Trading
“REPLAY” - Execution Example Module 1 Set of Rules
For Educational Purposes ONLY – see disclaimer
TradeTheRightEdge LLC, August 18,2011

4th eXit #3 print



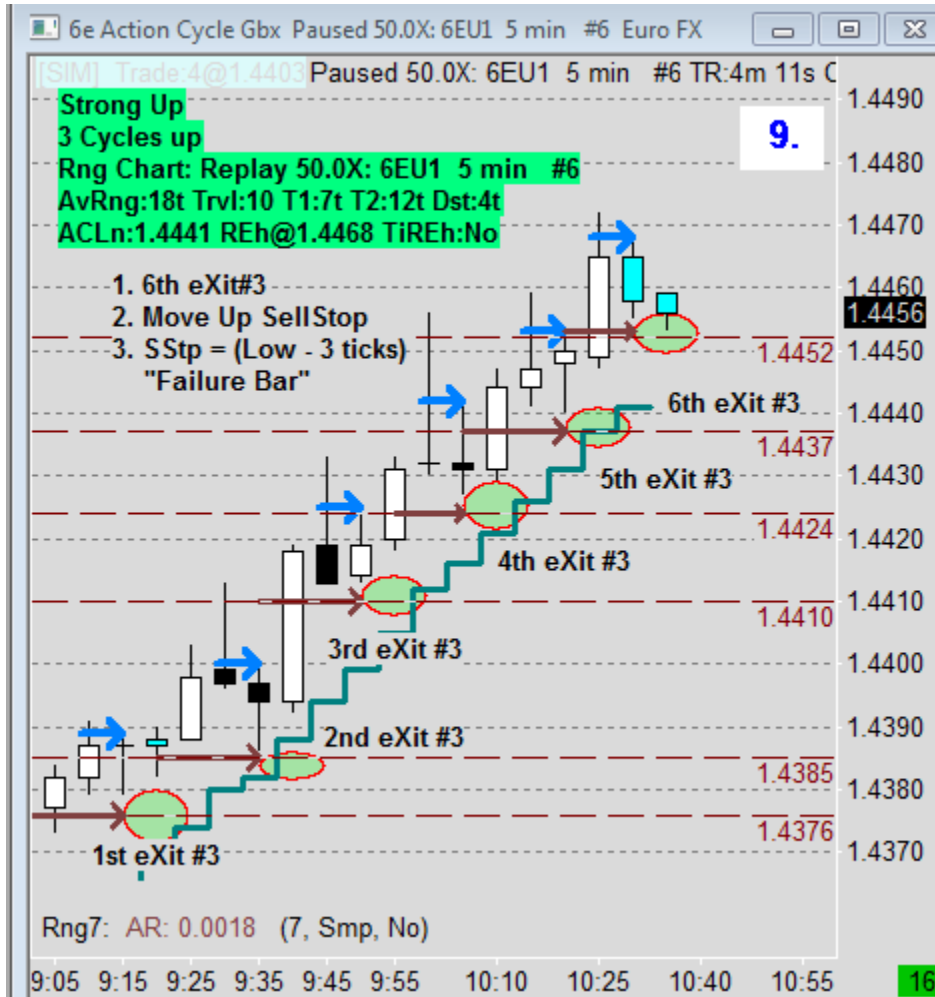
TTRE TradePlan Trainer – Path to Successful Trading
“REPLAY” - Execution Example Module 1 Set of Rules
For Educational Purposes ONLY – see disclaimer
TradeTheRightEdge LLC, August 18,2011

5th eXit #3 print



TTRE TradePlan Trainer – Path to Successful Trading
“REPLAY” - Execution Example Module 1 Set of Rules
For Educational Purposes ONLY – see disclaimer
TradeTheRightEdge LLC, August 18,2011

6th eXit #3 print



TTRE TradePlan Trainer – Path to Successful Trading
“REPLAY” - Execution Example Module 1 Set of Rules
For Educational Purposes ONLY – see disclaimer
TradeTheRightEdge LLC, August 18,2011

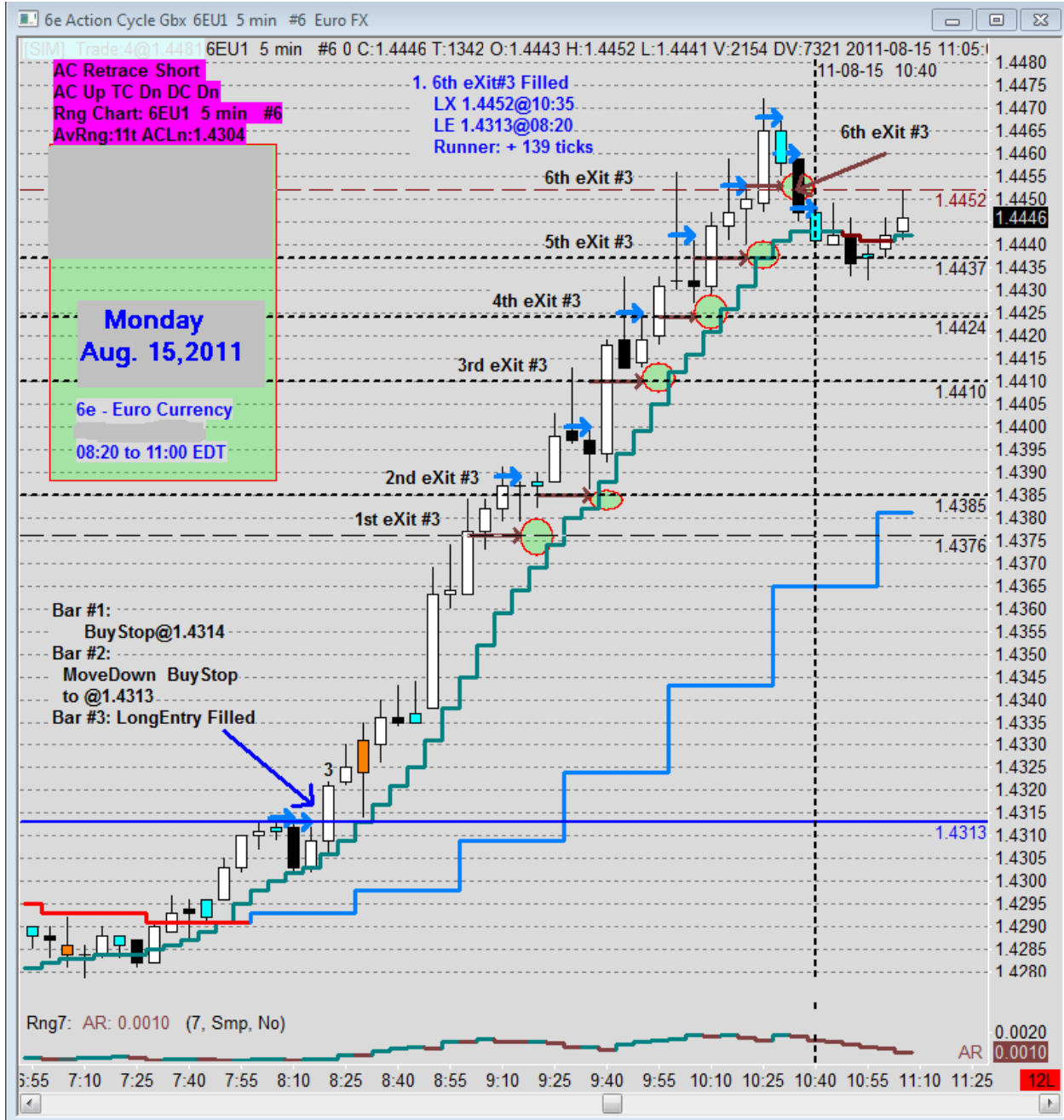
1. 6th eXit #3 Filled
2. Immediately place BuyStop Entry Order at REh, 1.4468 BlueArrow print
3. Execution trade process starts over again.



TTRE TradePlan Trainer – Path to Successful Trading
“REPLAY” - Execution Example Module 1 Set of Rules
For Educational Purposes ONLY – see disclaimer
TradeTheRightEdge LLC, August 18,2011

Monday, August 15, 2011, Euro (6e) Trade Progress from:

REh Blue Arrow LongEntry at 08:20 to eXit #3 at 10:35, 2 hours 15 minutes



**TTRE TradePlan Trainer – Path to Successful Trading
“REPLAY” - Execution Example Module 1 Set of Rules
For Educational Purposes ONLY – see disclaimer
TradeTheRightEdge LLC, August 18,2011**

TradeTheRightEdge.com

TradeTheRightEdge LLC is registered with the State of Georgia and is the owner of the website and the Trading Room

Statement of Disclaimer

U.S. Government Required Disclaimer - Commodity Futures Trading Commission. Futures and options trading have large potential rewards, but also large potential risk. You must be aware of the risks and be willing to accept them in order to invest in the futures and options markets. Don't trade with money you can't afford to lose. This email or the website is neither a solicitation nor an offer to Buy/Sell futures or options. No representation is being made that any account will or is likely to achieve profits or losses similar to those discussed on this website. The past performance of any trading system or methodology is not necessarily indicative of future results.

CFTC RULE 4.41 - HYPOTHETICAL OR SIMULATED PERFORMANCE RESULTS HAVE CERTAIN LIMITATIONS. UNLIKE AN ACTUAL PERFORMANCE RECORD, SIMULATED RESULTS DO NOT REPRESENT ACTUAL TRADING. ALSO, SINCE THE TRADES HAVE NOT BEEN EXECUTED, THE RESULTS MAY HAVE UNDER-OR-OVER COMPENSATED FOR THE IMPACT, IF ANY, OF CERTAIN MARKET FACTORS, SUCH AS LACK OF LIQUIDITY. SIMULATED TRADING PROGRAMS IN GENERAL ARE ALSO SUBJECT TO THE FACT THAT THEY ARE DESIGNED WITH THE BENEFIT OF HINDSIGHT. NO REPRESENTATION IS BEING MADE THAT ANY ACCOUNT WILL OR IS LIKELY TO ACHIEVE PROFIT OR LOSSES SIMILAR TO THOSE SHOWN.